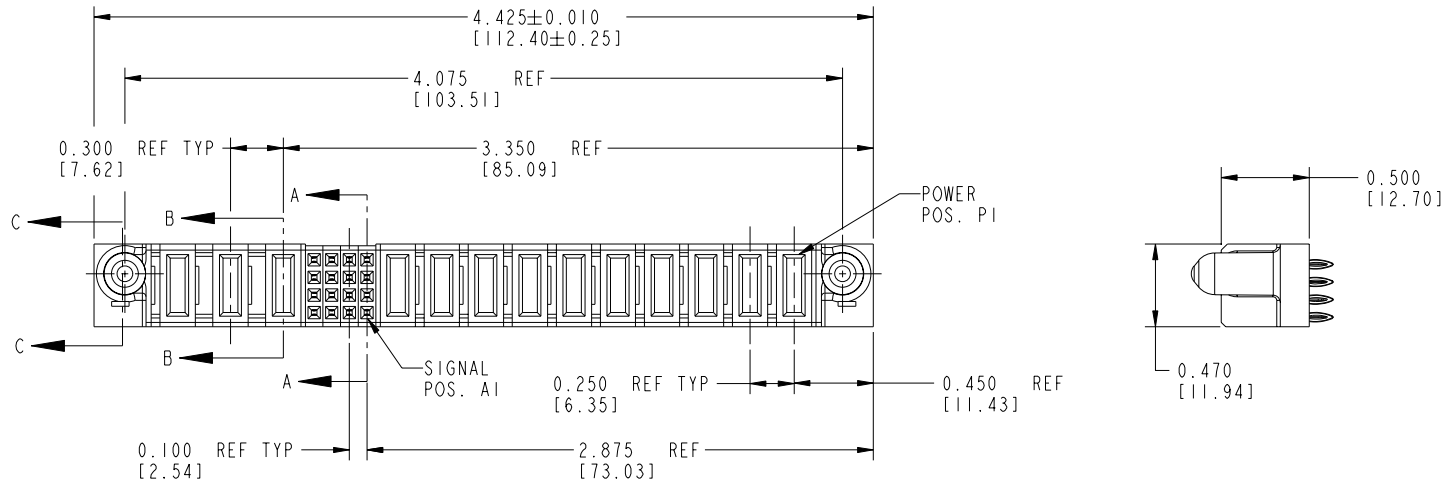


Tous droits strictement réservés. Reproduction ou communication à des tiers interdite sous quelque forme que ce soit sans autorisation écrite du propriétaire. Propriété de c FCI. Droits de reproduction FCI.

All rights strictly reserved. Reproduction or issue to third parties in any form whatever is not permitted without written authority from the proprietor. Property of FCI. Copyright FCI.

| | | | | | | | | | | | | | | | | | | | | |
|------------------------|------------------|-------|-----|-----|-----|--------|---|---|---|-------|----|----|----|----|----|----|----|----|----|----|
| PRODUCT No. | ROWS | POWER | | | | SIGNAL | | | | POWER | | | | | | | | E1 | | |
| | | E2 | P13 | P12 | P11 | 4 | 3 | 2 | 1 | P10 | P9 | P8 | P7 | P6 | P5 | P4 | P3 | | P2 | P1 |
| 51940-002-- NOTE: ② | D C B A | | PF | PF | PC | F | F | F | F | PF | PF | PF | PF | PF | PF | PF | PF | PF | PF | |



A
FCI

| CODE | DIM "M" MATING LENGTH | DIM "T" TAIL LENGTH | CONTACT TYPE |
|------|-----------------------|---------------------|--------------|
| F | N/A [N/A] | 0.135 [3.43] | SIGNAL |
| PC | 0.042 [1.07] | 0.135 [3.43] | POWER |
| PF | 0.092 [2.34] | 0.135 [3.43] | POWER |

| | | | | | | | | | |
|------------|-----------|-----|----------|-----------|------------|---------------------------------------|-------------|------------|--------|
| mat'l code | | | | SEE NOTES | | tolerances unless otherwise specified | | CUSTOMER | |
| ltr | ecn no. | dr | date | linear | angles | .XX±.01/0.X±0.3 | | COPY | |
| A | V12512 | JWS | 10/23/01 | | | .XXX±.005/0.XX±0.13 | | projection | |
| B | DG05-0232 | SJ | 07/20/05 | | | .XXX±.0020/.XXX±.051 | | INCH/MM | |
| | | | | dr | J. SHAFFER | 10/23/01 | scale | | 1:1 |
| | | | | enr | J. ALLISON | 10/23/01 | sheet index | | 1 of 3 |
| | | | | chr | J. ALLISON | 10/23/01 | revision | | B B |
| | | | | appd | J. ALLISON | 10/23/01 | sheet | | 1 2 |

| | | | |
|------------------------|--|--|--|
| CONFIDENTIAL | | | |
| A FCI | | www.fciconnect.com | |
| title | | 10P + 16S + 3ACP VERTICAL PRESSFIT RECEPTACLE | |
| product family | | PwrBlade | |
| size | | dwg no | |
| A | | 51940-002 | |
| cage code | | 22526 | |

Pro/E

PDM: Rev:B

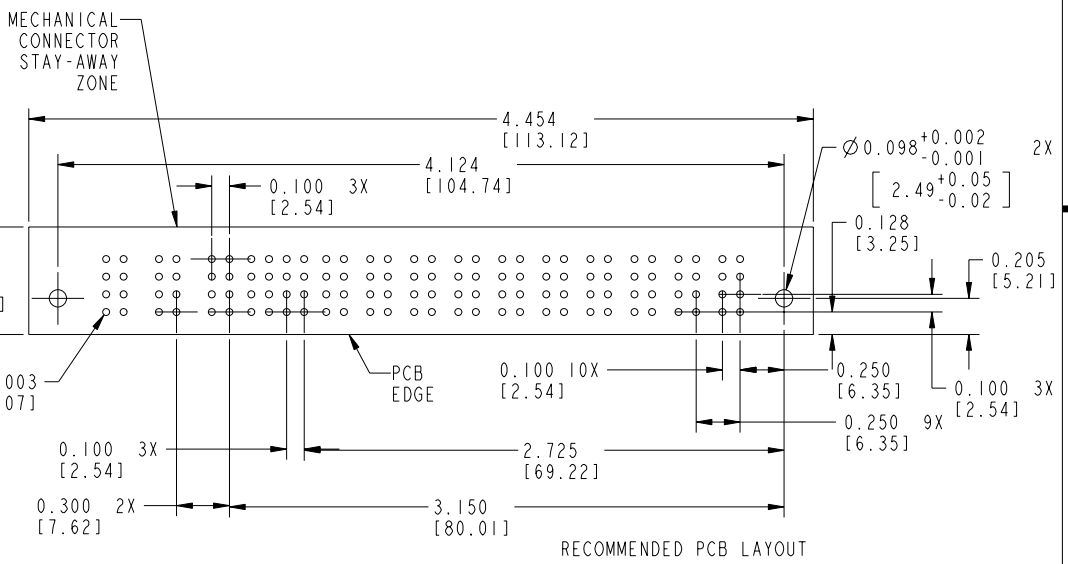
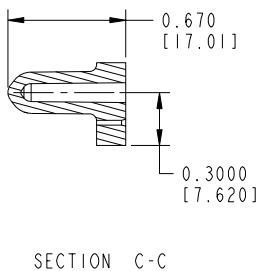
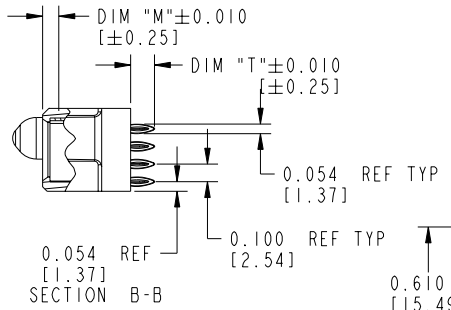
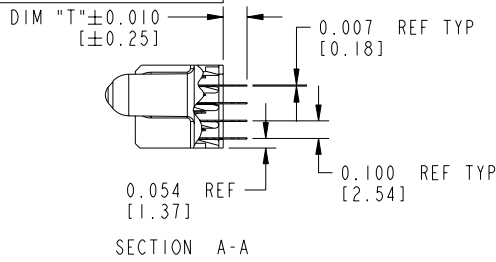
STATUS: Released

Printed: Aug 14, 2007

Tous droits strictement réservés. Reproduction ou communication a des tiers interdite sous quelque forme que ce soit sans autorisation écrite du propriétaire. Propriété de c FCI. Droits de reproduction FCI.

All rights strictly reserved. Reproduction or issue to third parties in any form whatever is not permitted without written authority from the proprietor. Property of FCI. Copyright FCI.

PRODUCT NUMBER
51940-002--
NOTE: (2)



| | | | | | | | | | |
|-------------|----------------|-----------|------|---------------------------------------|----------------------|----------|--|------------------------|--|
| mat'l code | | SEE NOTES | | tolerances unless otherwise specified | | CUSTOMER | | www.fciconnect.com | |
| ltr | ecn no. | dr | date | linear | .xx±.01/0.x±0.3 | COPY | | projection | title |
| A | | | | angles | .xxx±.005/0.xx±0.13 | INCH/MM | | | 10P + 16S + 3ACP VERTICAL PRESSFIT RECEPTACLE |
| | | | | dr | .xxx±.0020/.xxx±.051 | scale | | product family | PwrBlade |
| | | | | engr | 0°±2° | 1:1 | | size | code |
| | | | | chr | J. SHAFFER 10/23/01 | | | A | 213 |
| | | | | appd | J. ALLISON 10/23/01 | | | 51940-002 | sheet |
| | | | | | J. ALLISON 10/23/01 | | | | 2 |
| sheet index | revision sheet | | | | | | | | |

cage code 22526 4

Tous droits strictement réservés. Reproduction ou communication a des tiers interdite sous quelque forme que ce soit sans autorisation écrite du propriétaire. Propriété de c FCI. Droits de reproduction FCI.

All rights strictly reserved. Reproduction or issue to third parties in any form whatever is not permitted without written authority from the proprietor. Property of FCI. Copyright FCI.

PRODUCT NUMBER
51940-002_--
NOTE: ②

CONNECTOR NOTES:

- ① HOUSING MATERIAL: UL 94 V-0 GLASS FILLED HIGH TEMP THERMOPLASTIC
POWER CONTACT MATERIAL: COPPER ALLOY
SIGNAL CONTACT MATERIAL: COPPER ALLOY
- 2. PLATING:

51940-002 Singal Pin:30u"/0.76um Au OVER 50u"/1.27um Ni ON THE CONTACT AREA,
AND 100u"/2.54um SnPb PLATING OVER 50u"/1.27um Ni ON THE TERMINATION SECTION.
Power Pin:30u"/0.76um Au OVER 50u"/1.27um Ni ON THE CONTACT AREA,
AND 100u"/2.54um SnPb PLATING OVER 50u"/1.27um Ni ON THE TERMINATION SECTION.

51940-002LF Singal Pin:30u"/0.76um Au OVER 50u"/1.27um Ni ON THE CONTACT AREA,
AND 78u"/2.00um Sn PLATING OVER 50u"/1.27um Ni ON THE TERMINATION SECTION.
Power Pin:30u"/0.76um Au OVER 50u"/1.27um Ni ON THE CONTACT AREA,
AND 78u"/2.00um Sn PLATING OVER 50u"/1.27um Ni ON THE TERMINATION SECTION.

PART NUMBER 51940-002LF MEETS EUROPEAN UNION DIRECTIVE AND OTHER COUNTRY REGULATIONS AS DESCRIBED IN GS-22-008.

THE HOUSING WILL WITHSTAND EXPOSURE TO 260° PEAK TEMPERATURE FOR 10 SECONDS IN A WAVE SOLDER APPLICATION WITH A CIRCUIT BOARD.

- 3. "MANUFACTURER" NAME, P/N, AND DATE CODE TO APPEAR ON THIS SURFACE
- 4. PRODUCT SPECIFICATION GS-12-149

PCB NOTES:

- 5. ALL DIMENSIONS ARE BASIC UNLESS OTHERWISE SPECIFIED.
- 6. ALL THROUGH HOLES ARE LOCATED WITH A TRUE POSITION OF 0.004 [0.10]
- 7. ALL HOLE DIAMETERS ARE FINISHED HOLE SIZE
- 8. Ø0.098[2.49] THROUGH HOLES ARE UNPLATED.
- 9. Ø0.0453±0.0010 [1.151±0.025] DRILLED HOLES PLATED WITH 0.0003 [0.008] MIN SnPb OVER 0.001 [0.03] TO 0.003 [0.08] Cu PLATING TO ACHIEVE A Ø0.040±0.003 [1.02±0.07] HOLE.

CONFIDENTIAL

| | | | | | | | | | | | |
|-------------|----------------|-----------|------|---------------------------------------|---------------------|----------|--|------------|--|--------------------|------|
| mat'l code | | SEE NOTES | | tolerances unless otherwise specified | | CUSTOMER | | A FCI | | www.fciconnect.com | |
| ltr | ecn no. | dr | date | linear | .XX±.01/0.X±0.3 | COPY | | projection | title 10P + 16S + 3ACP VERTICAL PRESSFIT RECEPTACLE | | |
| B | | | | angles | .XXX±.005/0.XX±0.13 | INCH/MM | | | product family | PwrBlade | code |
| | | | | dr | .XXX±.0020/.XX±.051 | 1:1 | | | size | dwg no | 213 |
| | | | | enrg | 0°±2° | | | A | 51940-002 | 3 | |
| | | | | chr | J. SHAFFER 10/23/01 | | | | | | |
| | | | | appd | J. ALLISON 10/23/01 | | | | | | |
| | | | | | J. ALLISON 10/23/01 | | | | | | |
| sheet index | revision sheet | | | | | | | | | | |

cage code 22526 4